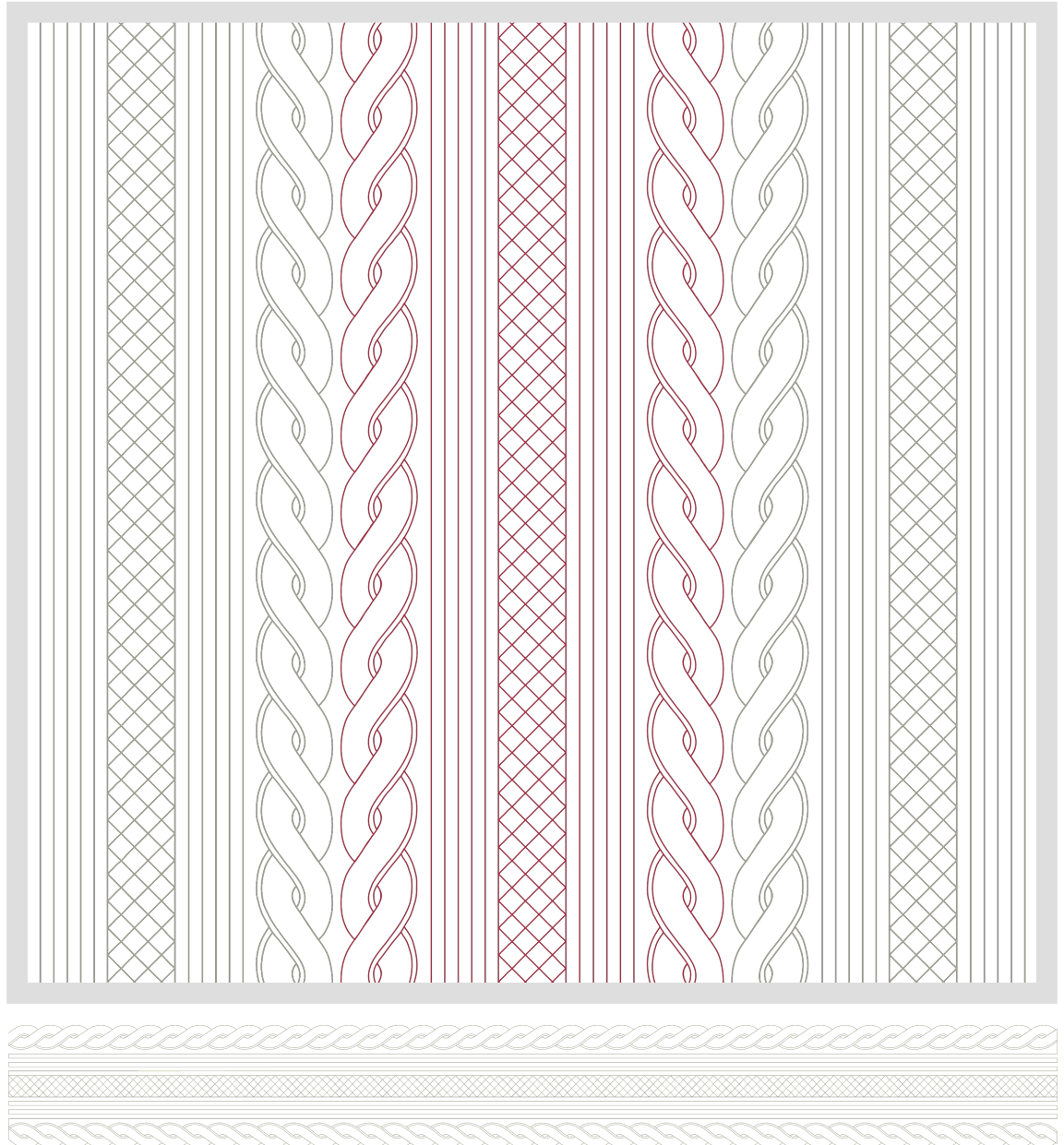




Cable Knit

© 2023 Jess Zeigler for Longarm League
#cableknitpanto

single repeat
default size:
122" w x 14.2" h



Difficulty: Intermediate

Row height: 12-15"

Gap: 0.25"

Offset: none

Backtracking: some

Notes:

This is an extended-width design. If unfamiliar with these type of designs,

please refer to our blog post, as set-up steps can differ from typical E2E designs:

longarmleague.com/blog/extended-width.

We have a L to R version included to limit machine sewing to one direction.

More info and pictures: longarmleague.com/blog/cable-knit